

CoB Building Design Review Submission General Information

1. Name of Project: HUSH & WHISPER BARREL STORAGE
 Legal: Lot 1, Block 1, Hush & Whisper Barrel Storage
 Address: 2898 FM 974, Bryan, TX, 77808

2. Owner/Applicant's Contact Information:
 Name: Joe Langston
 Company: Tabor Road Ventures
 Address: 2501 Earl Rudder Freeway South, Suite 100
 Phone: (979)595-3620

3. Architect's Contact Information
 Name: Soheil Hamideh, Project Manager
 Company: The Arkitek Studio, Inc.
 Address: 308 North Bryan Ave., Bryan, Texas 77803
 Phone: (979)821-2635

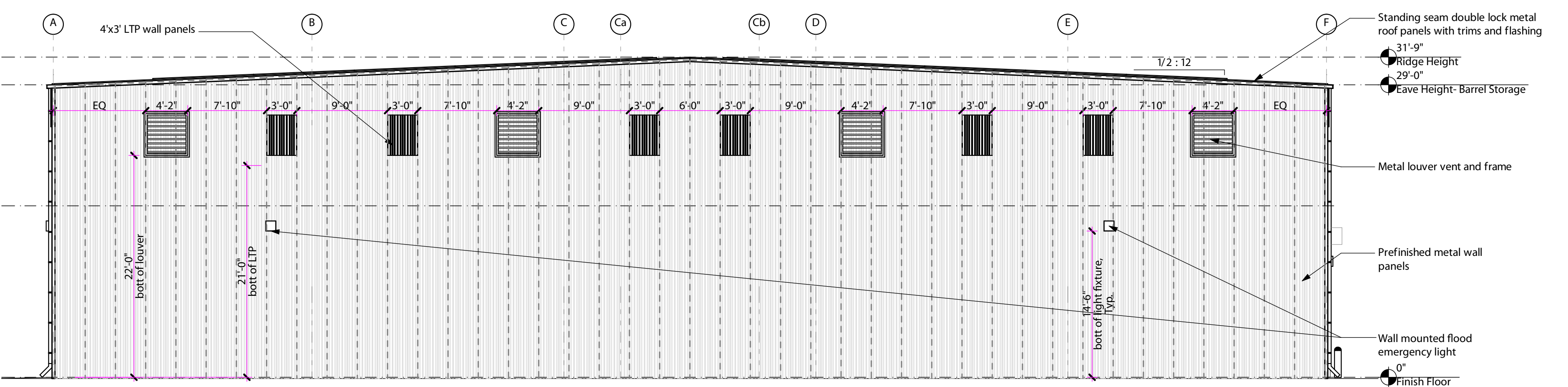
Date of Submittal: 5/17/2023

MATERIALS	COLOR	SQUARE FOOTAGE (sf)
Prefinished metal panels, Louvers, trims, downspouts, and gutters	Charcoal Gray, Signiture 200	5890.7
Painted steel (HM doors and Frames)	Sherwin Williams; Snowbound SW7004	24.3
Painted steel (Bollards)	Sherwin Williams; SW4084 Safety Yellow	2
Prefinished metal (Overhead Motorized Door)	DuraCoil Grey; PowderCoated	169
LTPs (Light Transition Panels)	No-Color; Translucent	204
EAST ELEVATION- TOTAL VERTICAL SQUARE FOOTAGE (sf)		6290

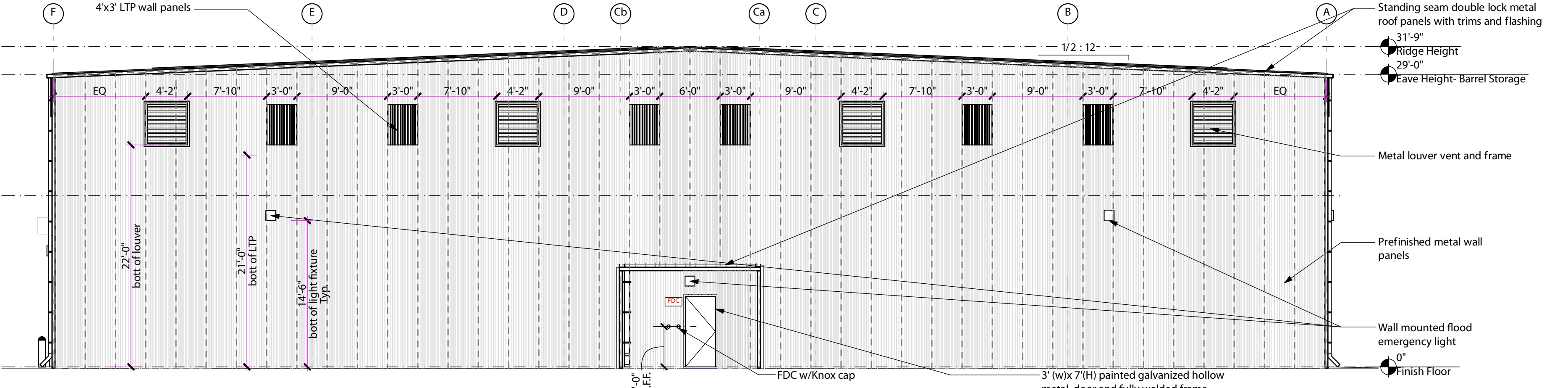
MATERIALS	COLOR	SQUARE FOOTAGE (sf)
Prefinished metal panels, Louvers, trims, downspouts, and gutters	Charcoal Gray, Signiture 200	6061.7
Painted steel (HM doors and Frames)	Sherwin Williams; Snowbound SW7004	24.3
LTPs (Light Transition Panels)	No-Color; Translucent	204
WEST ELEVATION- TOTAL VERTICAL SQUARE FOOTAGE (sf)		6290

MATERIALS	COLOR	SQUARE FOOTAGE (sf)
Prefinished metal panels, Louvers, trims, downspouts, and gutters	Charcoal Gray, Signiture 200	3792.45
Painted steel (HM doors and Frames)	Sherwin Williams; Snowbound SW7004	24.3
LTPs (Light Transition Panels)	No-Color; Translucent	72
NORTH ELEVATION- TOTAL VERTICAL SQUARE FOOTAGE (sf)		3888.75

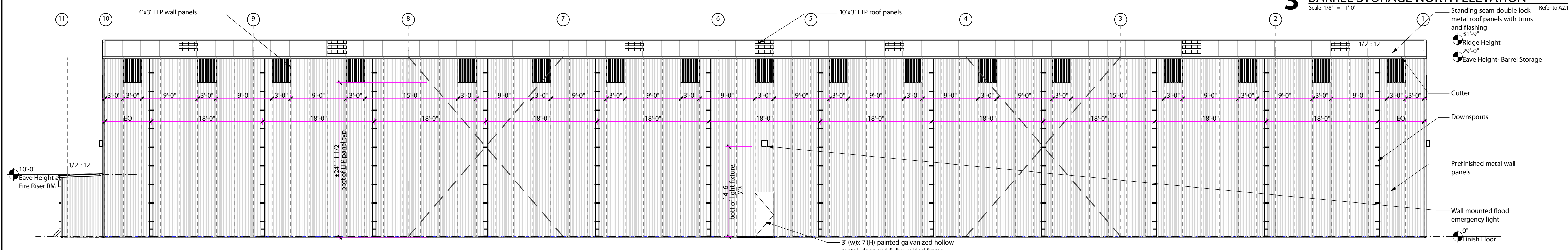
MATERIALS	COLOR	SQUARE FOOTAGE (sf)
Prefinished metal panels, Louvers, trims, downspouts, and gutters	Charcoal Gray, Signiture 200	3816.75
LTPs (Light Transition Panels)	No-Color; Translucent	72
SOUTH ELEVATION- TOTAL VERTICAL SQUARE FOOTAGE (sf)		3888.75



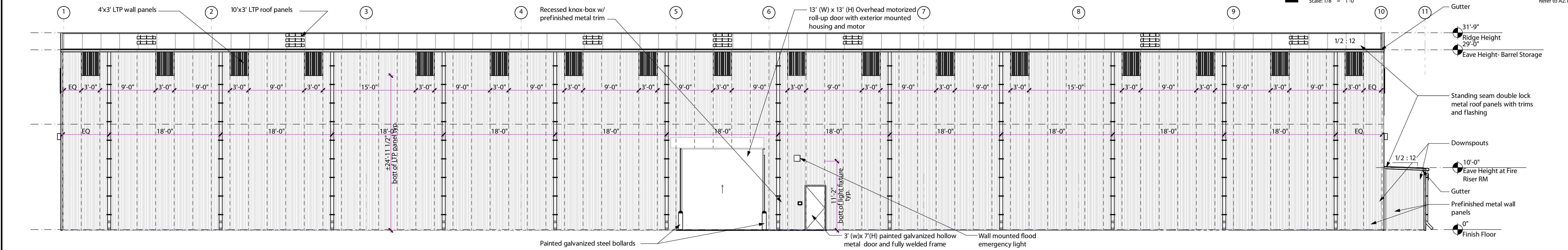
4 BARREL STORAGE SOUTH ELEVATION
 Scale: 1/8" = 1'-0" Refer to A2.1



3 BARREL STORAGE NORTH ELEVATION
 Scale: 1/8" = 1'-0" Refer to A2.1



2 BARREL STORAGE WEST ELEVATION
 Scale: 1/8" = 1'-0" Refer to A2.1



1 BARREL STORAGE EAST ELEVATION
 Scale: 1/8" = 1'-0" Refer to A2.1

The Arkitek Studio, Inc.
 308 N. Bryan Ave.
 Bryan, TX 77803
 P (979)821-2635
 F (979)775-8224
 www.arkitek.com

The Arkitek Studio, Inc. is providing, by agreement with certain parties, materials stored electronically. The parties recognize that data, plans, specifications, reports, documents or other information recorded on or transmitted as electronic media (including but not necessarily limited to "CAD documents") are subject to undetectable alteration, either intentionally or unintentionally, due to, among other causes, transmission, conversion, media degradation, software error, or human alteration. Accordingly, all such documents are provided to the parties for informational purposes only and not as an end product or as a record document. Any reliance thereon is deemed to be unreasonable and unenforceable. The signed and/or stamped hard copies of the Architect's Instruments of Service are the only true and correct documents of record.

12/22/22

New Buildings for
Hush & Whisper Barrel Storage
 2898 FM 974, Bryan, Texas 77808

Revisions	Number	Date
Δ	1	2/27/23

Project 22009
 12/22/22
 BARREL STORAGE ELEVATIONS

A3.1

CoB Building Design Review Submission General Information

1. Name of Project: HUSH & WHISPER BARREL STORAGE
 Legal: Lot 1, Block 1, Hush & Whisper Barrel Storage
 Address: 2898 FM 974, Bryan, TX, 77808

2. Owner/Applicant's Contact Information:
 Name: Joe Langston
 Company: Tabor Road Ventures
 Address: 2501 Earl Rudder Freeway South, Suite 100
 Phone: (979)595-3620

3. Architect's Contact Information
 Name: Soheil Hamideh, Project Manager
 Company: The Arkitex Studio, Inc.
 Address: 308 North Bryan Ave., Bryan, Texas 77803
 Phone: (979)821-2635

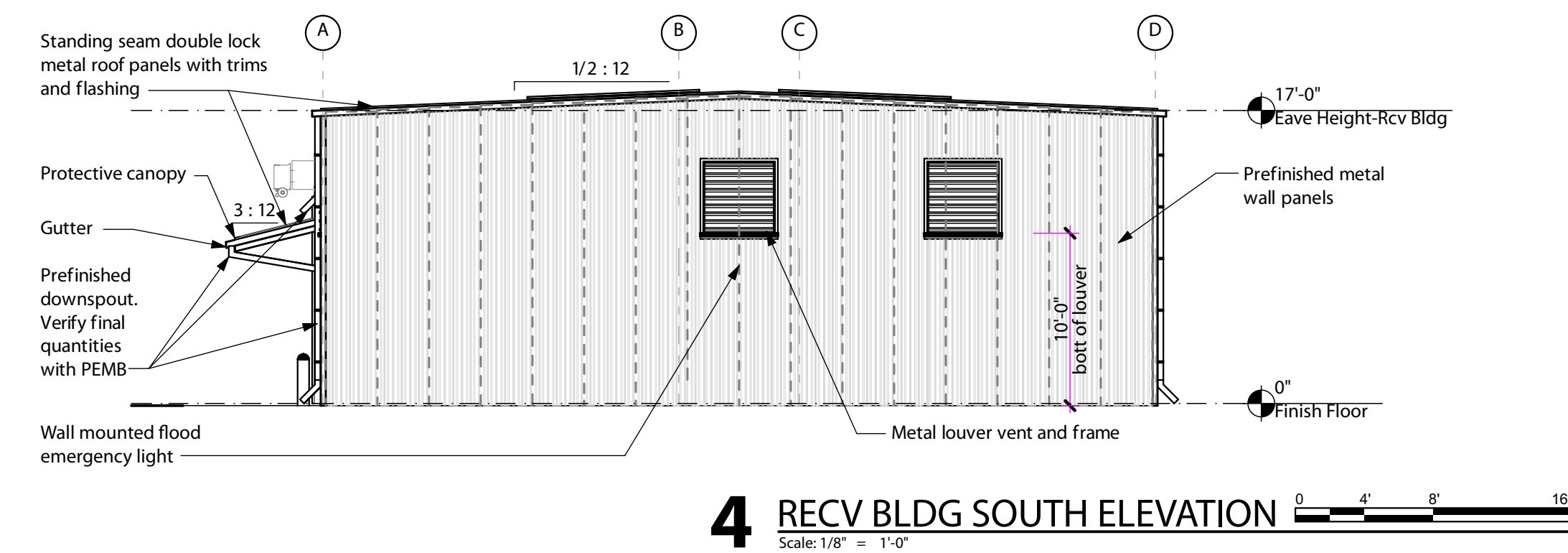
Date of Submittal: 5/17/2023

MATERIALS	COLOR	SQUARE FOOTAGE (sf)
Prefinished metal panels, Louvers, trims, downspouts, and gutters	Charcoal Gray, Signiture 200	1700
LTPs (Light Transition Panels)	No-Color; Translucent	335.5
EAST ELEVATION- TOTAL VERTICAL SQUARE FOOTAGE (sf)		2035.5

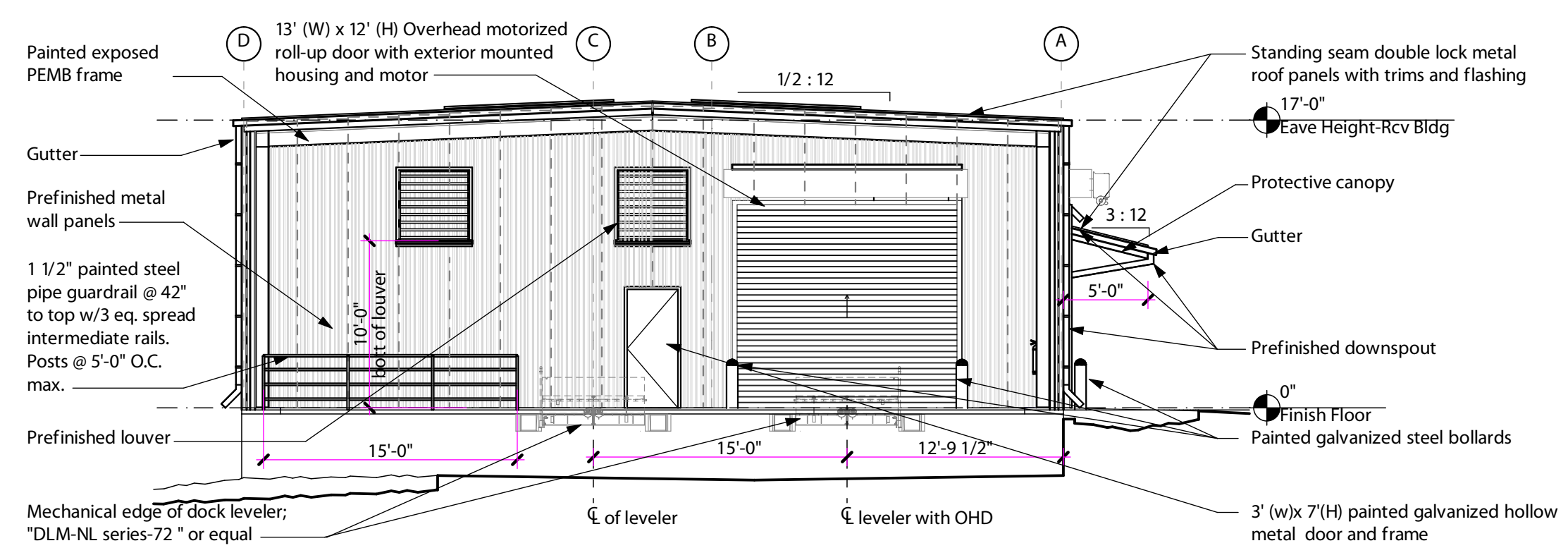
MATERIALS	COLOR	SQUARE FOOTAGE (sf)
Prefinished metal panels, Louvers, trims, downspouts, and gutters	Charcoal Gray, Signiture 200	1564
Painted steel (HM doors and Frames)	Sherwin Williams; Snowbound SW7004	121.5
Painted steel (Bollards)	Sherwin Williams; SW4084 Safety Yellow	2
Prefinished metal (Overhead Motorized Door)	DuraCoil Grey; PowderCoated	156
LTPs (Light Transition Panels)	No-Color; Translucent	192
WEST ELEVATION- TOTAL VERTICAL SQUARE FOOTAGE (sf)		2035.5

MATERIALS	COLOR	SQUARE FOOTAGE (sf)
Prefinished metal panels, Louvers, trims, downspouts, and gutters	Charcoal Gray, Signiture 200	687.2
Painted steel (HM doors and Frames)	Sherwin Williams; Snowbound SW7004	24.3
Painted steel (Bollards & Gaurdrail)	Sherwin Williams; SW4084 Safety Yellow	6
Prefinished metal (Overhead Motorized Door)	DuraCoil Grey; PowderCoated	156
NORTH ELEVATION- TOTAL VERTICAL SQUARE FOOTAGE (sf)		873.5

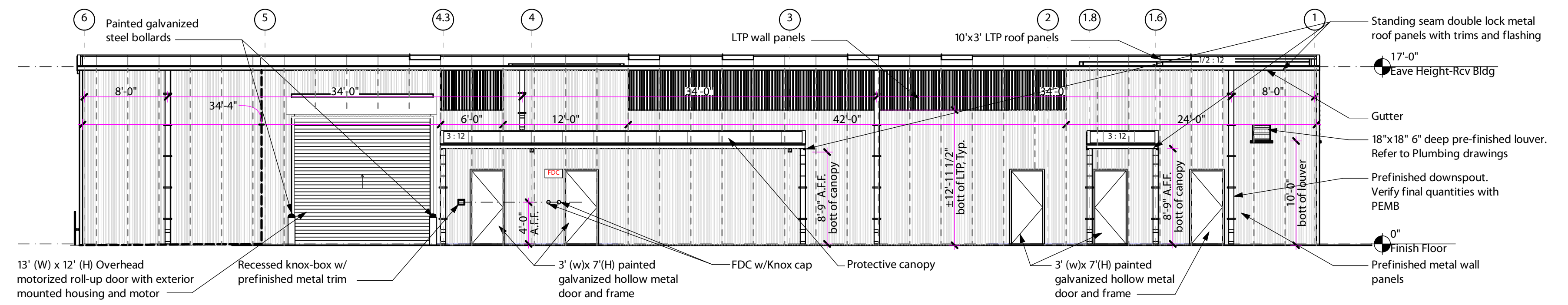
MATERIALS	COLOR	SQUARE FOOTAGE (sf)
Prefinished metal panels, Louvers, trims, downspouts, and gutters	Charcoal Gray, Signiture 200	873.5
SOUTH ELEVATION- TOTAL VERTICAL SQUARE FOOTAGE (sf)		873.5



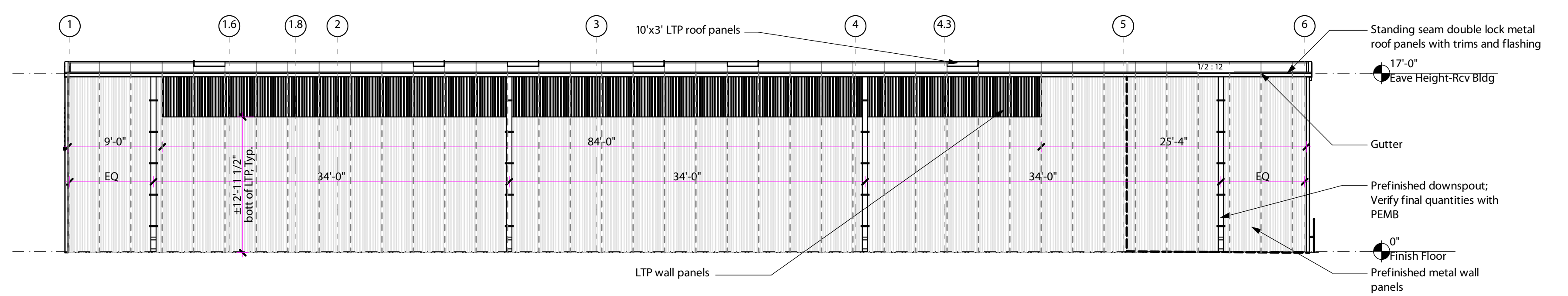
4 REC V BLDG SOUTH ELEVATION
 Scale: 1/8" = 1'-0"



3 REC V BLDG NORTH ELEVATION
 Scale: 1/8" = 1'-0"



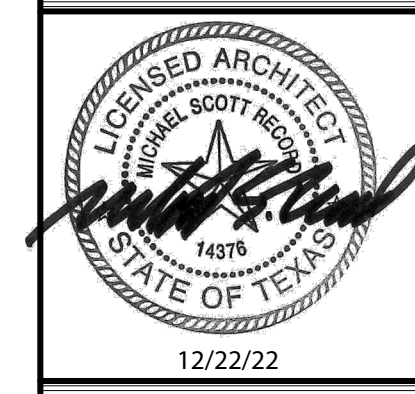
2 REC V BLDG WEST ELEVATION
 Scale: 1/8" = 1'-0"



1 REC V BLDG EAST ELEVATION
 Scale: 1/8" = 1'-0"

The Arkitex Studio, Inc.
 308 N. Bryan Ave.
 Bryan, TX 77803
 P (979)821-2635
 F (979)775-8224
 www.arkitex.com

The Arkitex Studio, Inc. is providing, by agreement with certain parties, materials stored electronically. The parties recognize that data, plans, specifications, reports, documents or other information recorded on or transmitted as electronic media (including but not necessarily limited to "CAD documents") are subject to undetectable alteration, either intentionally or unintentionally, due to, among other causes, transmission, conversion, media degradation, software error, or human alteration. Accordingly, all such documents are provided to the parties for informational purposes only and not as an end product or as a record document. Any reliance thereon is deemed to be unreasonable and unenforceable. The signed and/or stamped hard copies of the Architect's Instruments of Service are the only true contract documents of record.



New Buildings for
Hush & Whisper Barrel Storage
 2898 FM 974, Bryan, Texas 77808

Revisions	
Number	Date
1	2/27/23

Project 22009
 12/22/22
 REC V BLDG ELEVATIONS

A3.3



The
Arkitek
Studio, Inc.

308 N. Bryan Ave.
Bryan, TX 77803
P (979)821-2635
F (979)775-8224
www.arkitek.com

The Arkitek Studio, Inc. is providing, by agreement with certain parties, materials stored electronically. The parties recognize that data, plans, specifications, reports, documents or other information recorded on or transmitted as electronic media (including but not necessarily limited to "CAD documents") are subject to undetectable alteration, either intentionally or unintentionally, due to, among other causes, transmission, conversion, media degradation, software error, or human alteration. Accordingly, all such documents are provided to the parties for informational purposes only and not as an end product or as a record document. Any reliance thereon is deemed to be unreasonable and unenforceable. The signed and/or stamped hard copies of the Architect's Instruments of Service are the only true contract documents of record.



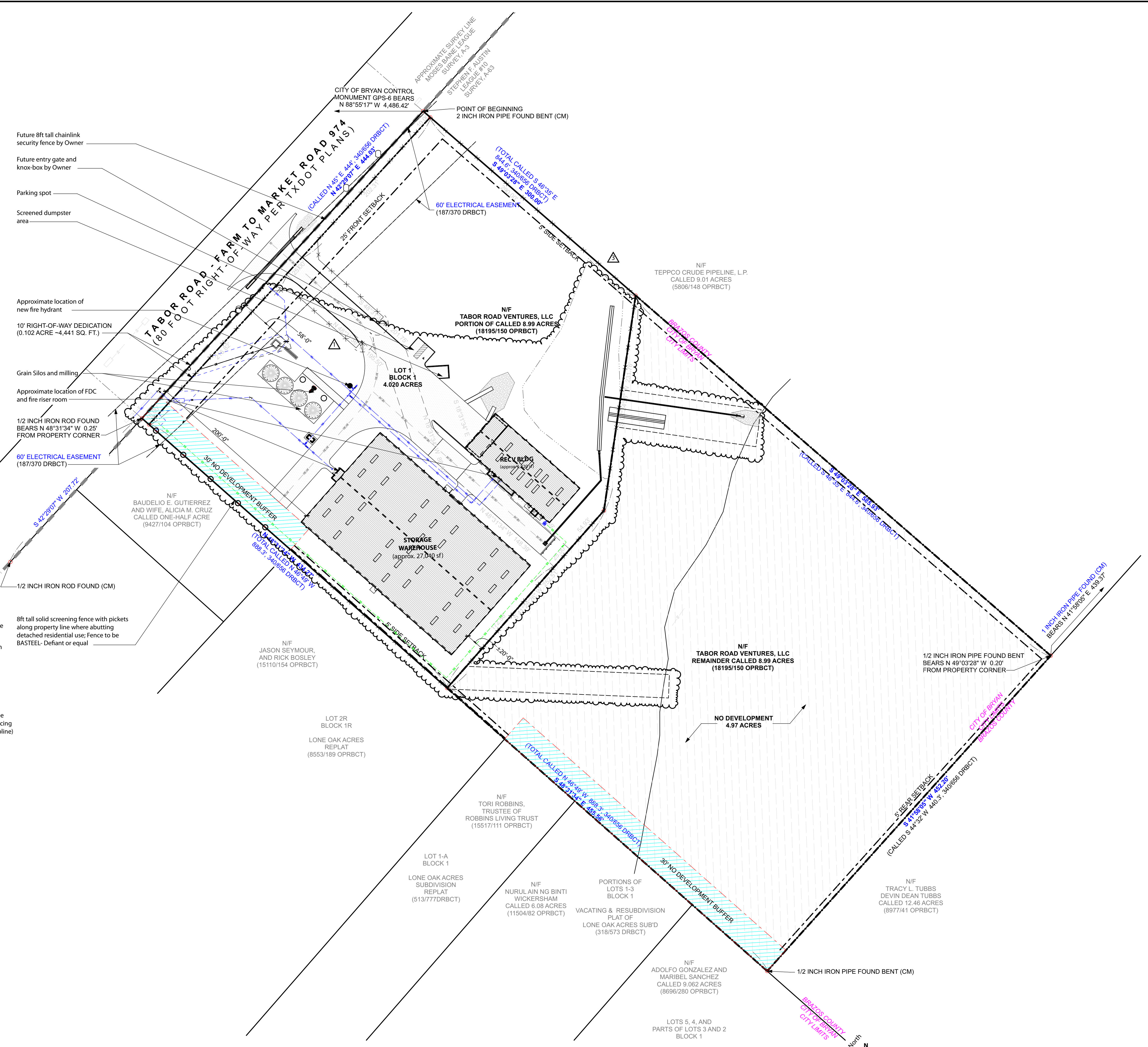
12/22/22

New Buildings for
Hush & Whisper Barrel Storage
2898 FM 974, Bryan, Texas 77808

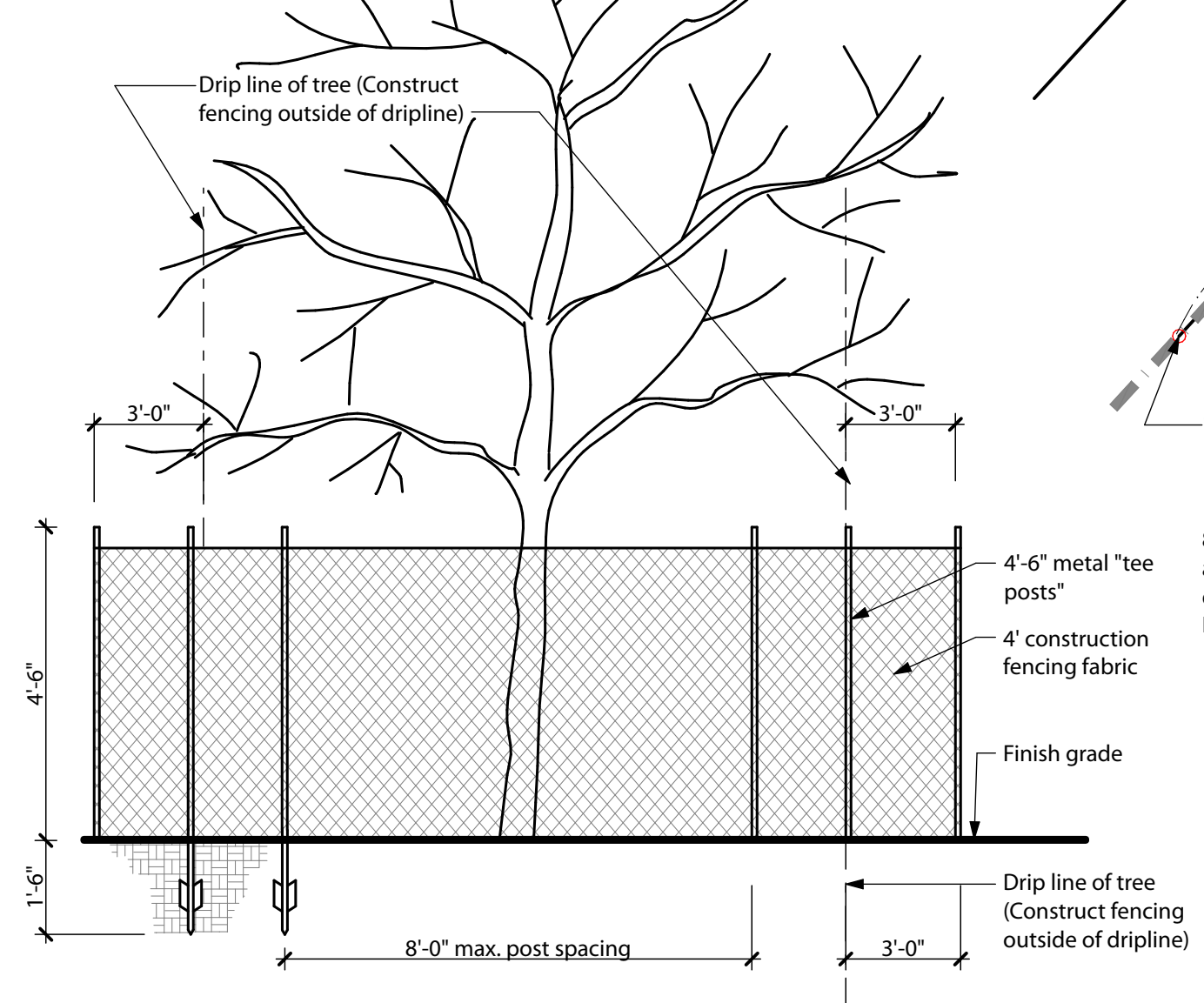
Revisions	
Number	Date
1	1/30/23
2	2/27/23

Project 22009
12/22/22
SITE PLAN

A1.1

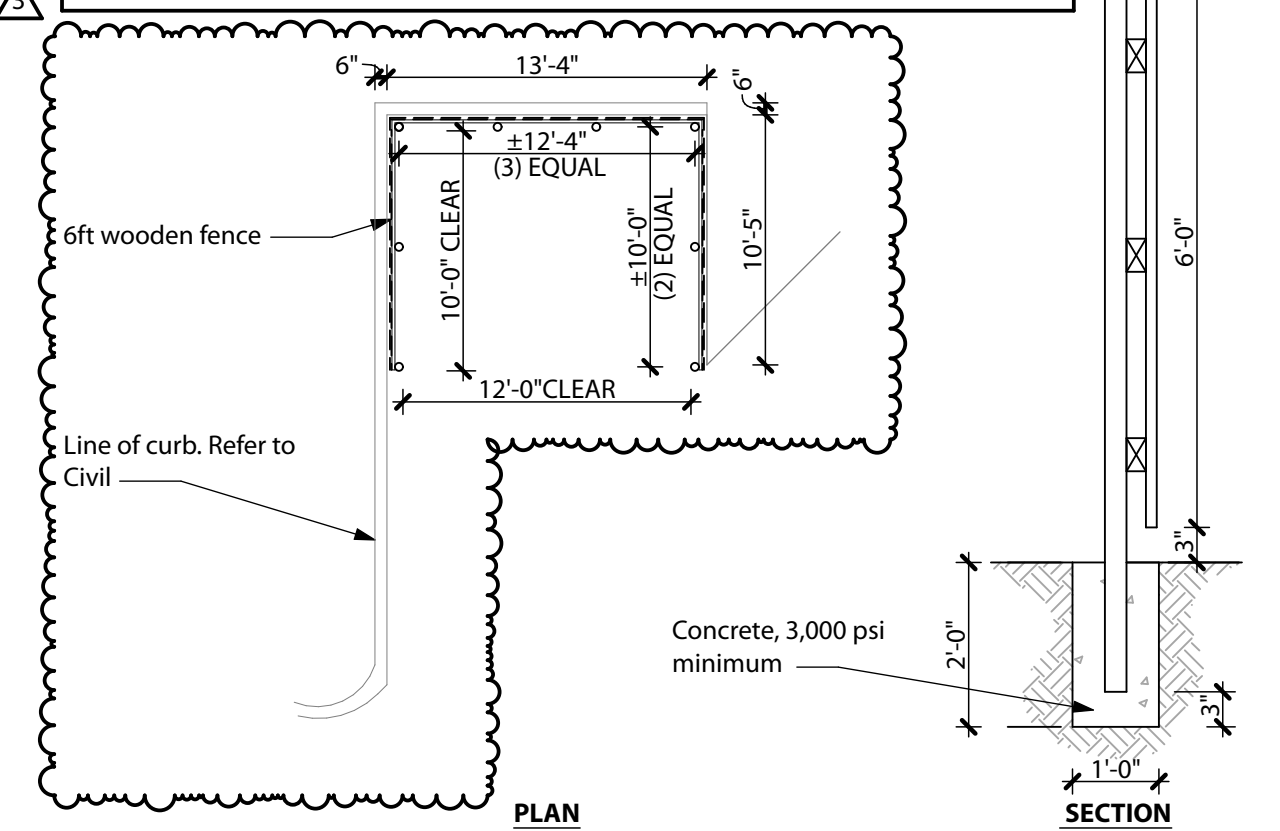


NOTE:
Contractor is responsible for protecting existing trees to remain at areas of construction.
All new trees, where required per City, to be installed minimum of 10ft away from building foundation, slab and sidewalks/pavement.



3 TREE PROTECTION DETAIL
NOT TO SCALE

NOTE:
All fence enclosures shall meet City of Bryan & property Owner Association standards.
Pickets shall be 1x6 dog-eared, stained leader attached with galvanized screws.
Rails shall be pressure treated 2x4.
Posts shall be metal post set in 3,000 psi minimum concrete.



2 DUMPSTER ENCLOSURE DETAIL
NOT TO SCALE

1 SITE PLAN
Scale: 1" = 50'

